

Butterfly

gather the materials: felt, some wire (I use something that is called telephone wire (can be bought at Radioshack), it is really fat wire but when you take top isolation coating off then inside are 4 skinny and very pliable wires that retain shape extremely well; also it doesn't break easily, you can bend it back and forth hundreds of times; I think floral wire would work fine as well, I only have 24 gauge and that seemed a bit too stiff to me), embroidery floss, 1 pipecleaner, very little bit of wool

cut out:

butterfly wings, 2

decorations for wings

2 body parts

separate embroidery floss, I like to use 3 strands



embroider the wings. I like to do some kind of the design on the bottom side of the wings as well, since I want to hang my butterfly eventually



now bend your wire to the shape of the wings. It does not have to be very exact, since you keep shaping it as you stitch it to the wings. It is better to have about 2-3 inches of extra wire, about an inch on each end



now put your two layers of wings together and fix with one small stitch



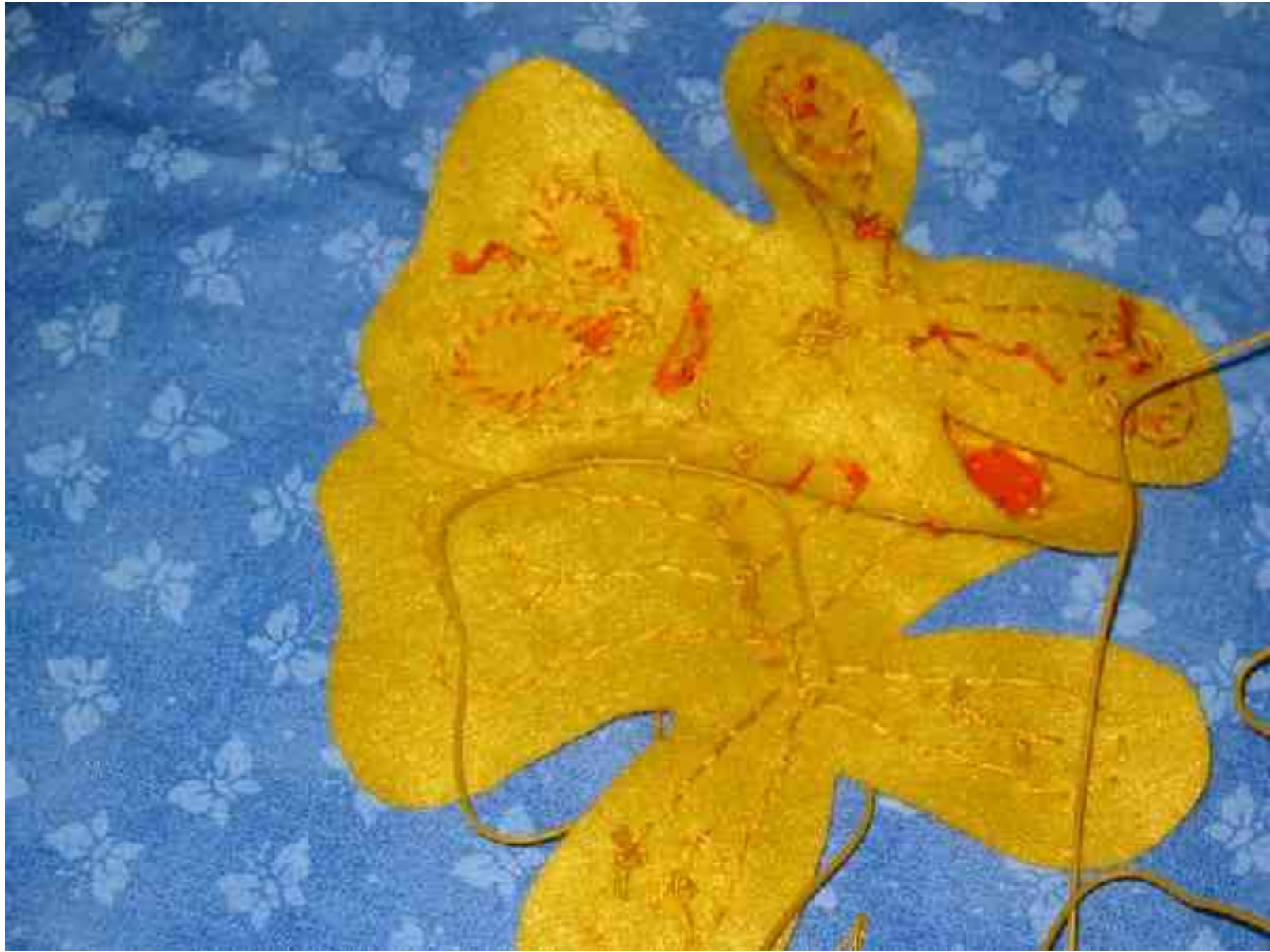
on the next stitch grab some wire into the stitch





now make 3 stitches without grabbing the wire in and on the 4th stitch grab wire again. It is helpful to make the 3 stitches a bit shorter than the 4th one





continue in this pattern until you have only half of a wing left to do



measure out how much more wire do you need to complete the butterfly. This time it is important to be exact. Pull out the extra end of wire from the body and twist extra lengths from both ends together. Turn sharp ends under



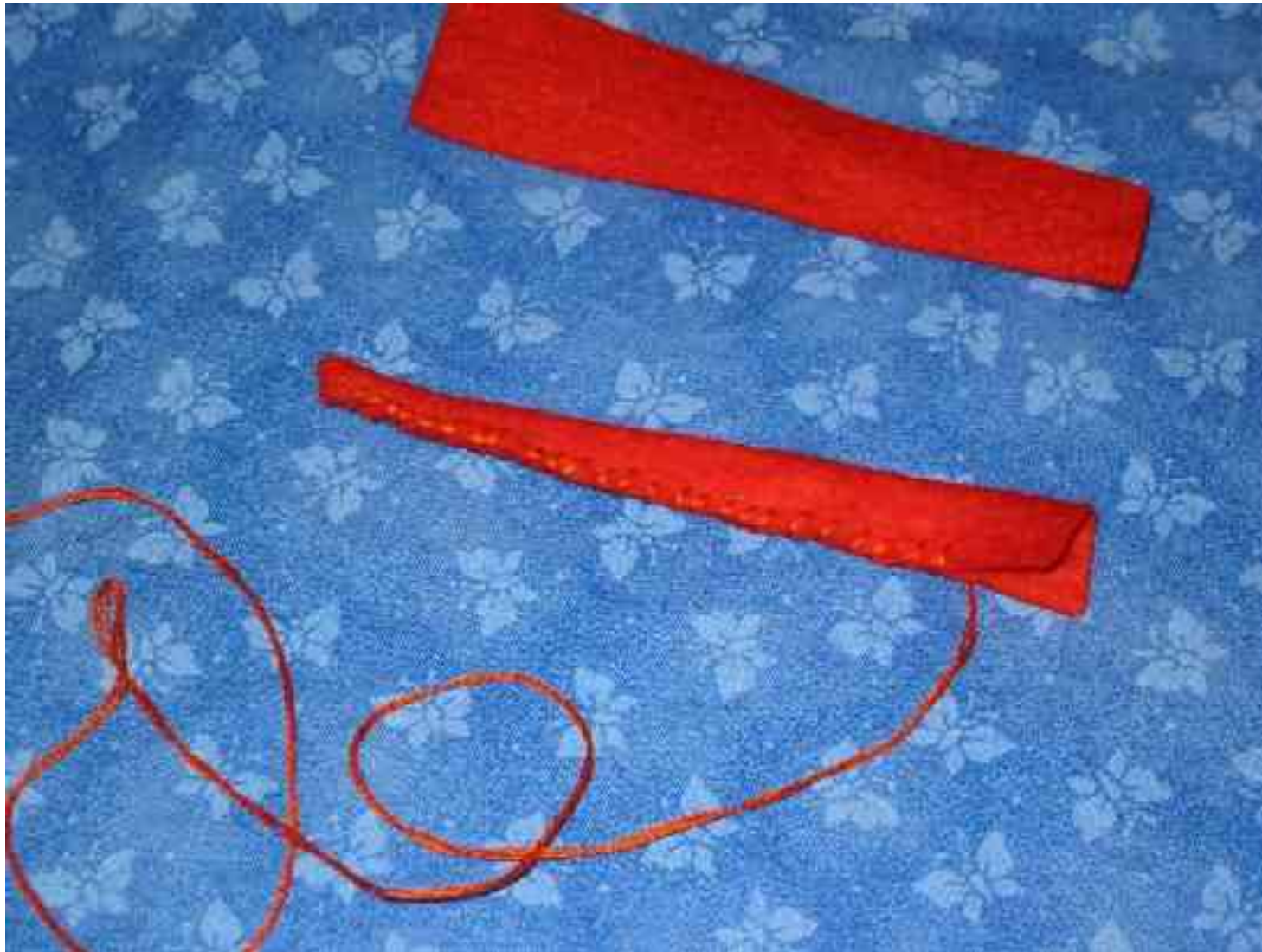
tuck the twisted wire into the wings so that it lies in the center



now finish sewing around the rest of the wings



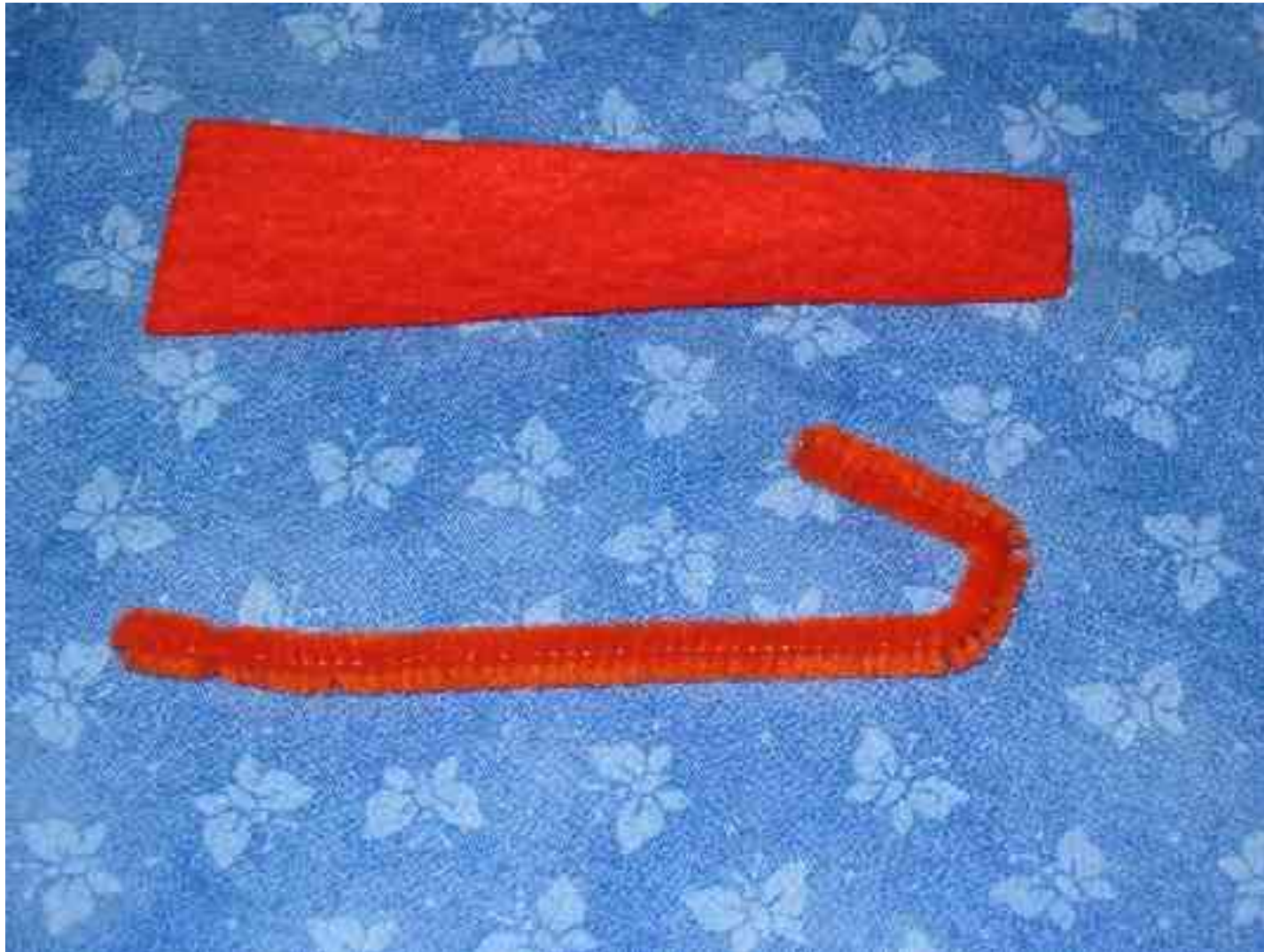
take your body pieces. Sew the sides of one together in whip stitch, don't pull the threads too tight. The stitching does not have to look neat since it won't show in the end. It is helpful to use thread of the body color though, just in case some longer stitch is annoying and wants to show later



now flatten out the piece so that stitching is in the center



take a pipe cleaner, cut it to about 1 1/2 inches longer than body and bend one end under and curve the other end



wrap a tiny bit of wool around the curved end to form head



sew pipe cleaner into the second body part. At the head end some wool might show, this does not matter since this is only half of the body



now match your body halves together, the one with pipe cleaner core goes to the bottom side of the wings. Figure out where wings meet tail

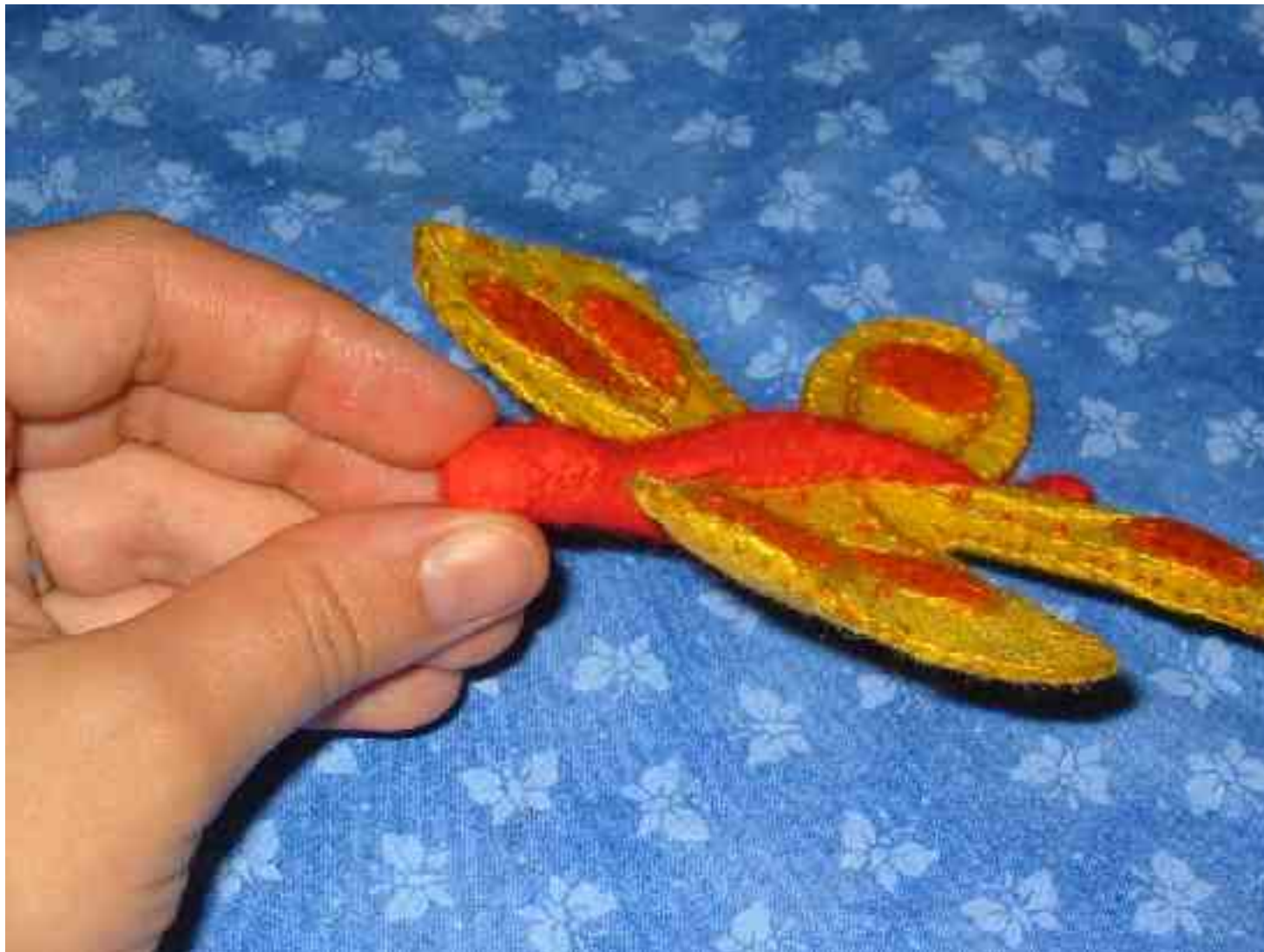


sew the tail end parts of the body together. Put around the wings

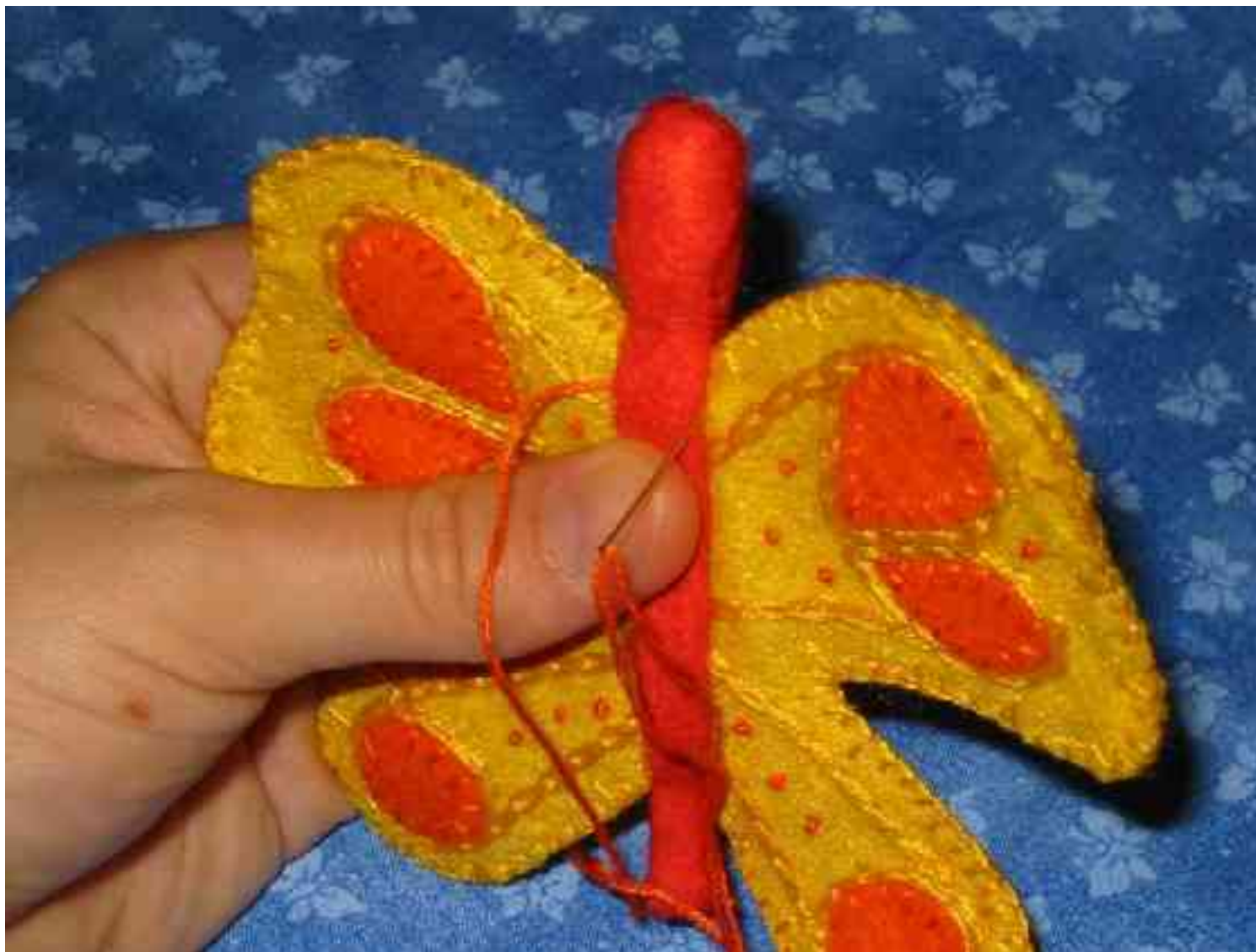


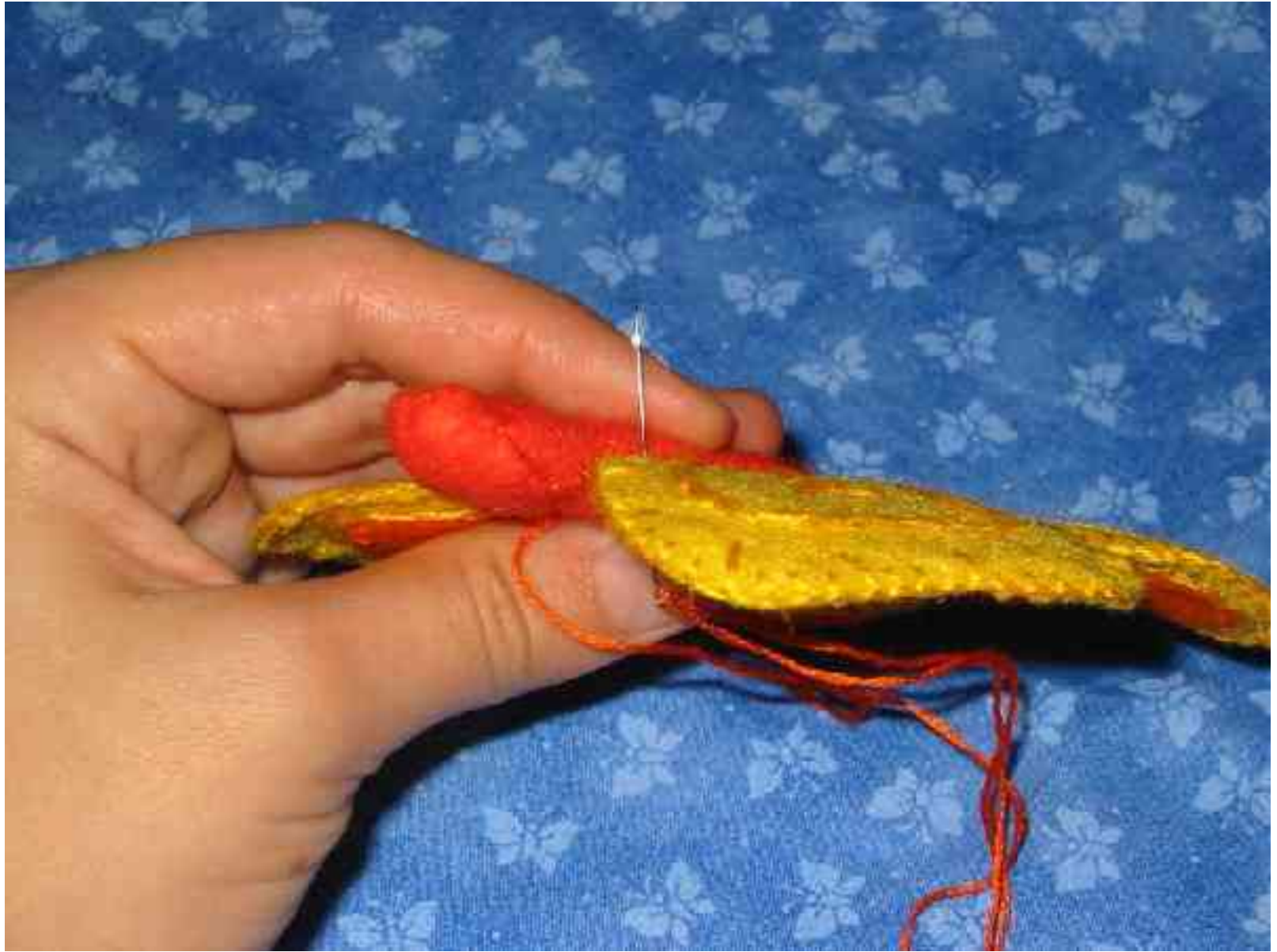


now sew the head part of the body together



start attaching the body to the wings. To do that make a stitch around both sides of the body







this is how you move from one stitch around the body to the next



now do this on the entire length of the body, including the tail (the tail needs it just for uniformity) and neck. The butterfly is done! Here I added wire antennae since I know little kids won't get to play with my butterfly. You could also make antennae from small strips of felt or just skip them

the top side



bottom side



